

Ref. A04 R V 125 UO2A/40 V5
Technical Report 1.0

2013.02

n. 614284

03/08/2016

DE-16-001373/00 pos. 1

Worm Gear reducer - catalogue A04

Application given data

N.A.

Designation: R V 125 UO2A/40 V5
 Mounting position V5, $n_1 = 1400$ [min⁻¹]

Standard product : Yes

Accessories and special designs

Reduced backlash . (GR)
 Double seal (h.s.-l.s.) with ext.rings (DT4)

Reducer/Gearmotor specifications

Transmission ratio i		40
Output speed n_2	[min ⁻¹]	35,0
Input speed n_1	[min ⁻¹]	1400
Input power P_1	[kW]	N.A.
Output torque M_2	[N m]	N.A.
Service factor f_s		N.A.
Efficiency		0,80
Mass of gear reducer (without motor)	[kg]	74
Provisional lubricant quantity	[l]	5,7
ISO viscosity grade	[cSt]	320

Nominal Data

Nominal input power P_{N1}	[kW]	5,7
Nominal output power P_{N2}	[kW]	4,58
Nominal output torque M_{N2}	[N m]	1249
Maximum output torque M_{2max}	[N m]	2275

Verifications

<i>Safety factor on M_{2peak}</i>	N.A.
<i>Thermal power verification</i>	N.A.
<i>External loads verificaton</i>	N.A.

Top view with M.P. B3



Ref. A04 R V 125 UO2A/40 V5
Technical Report 1.0

2013.02

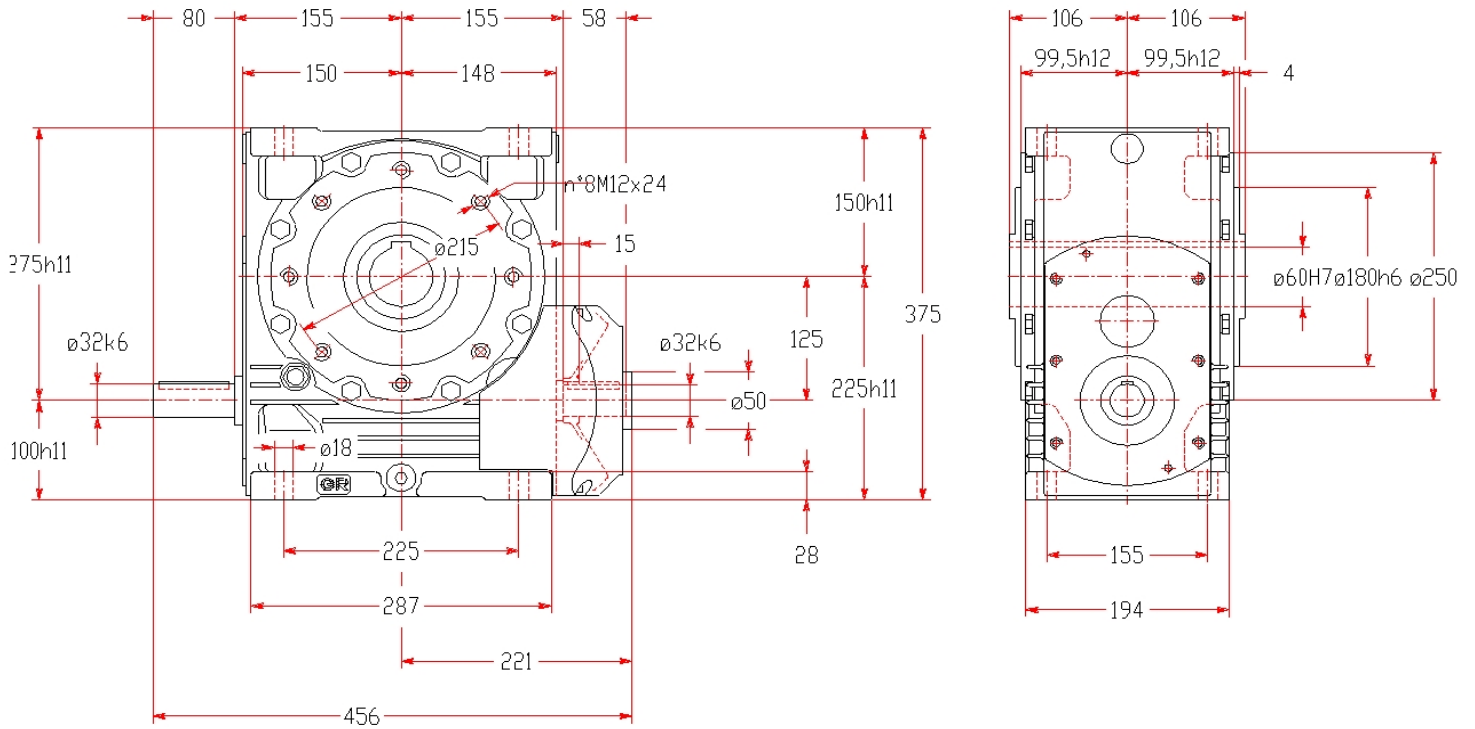
n. 614284

03/08/2016

DE-16-001373/00 pos. 1

Worm Gear reducer - catalogue A04

Main Dimensions [mm] (only for standard gearbox, in case of non-standard design see the drawing on the next page)



Informations and warnings:

Worm gear pair Z2/Z1 = 40/1; Axial module = 5,1; Helix angle = 6°13';

Static efficiency = 0,46; Uncertain static reversibility; Dynamic reversibility, after running-in, with efficiency > 0,6.

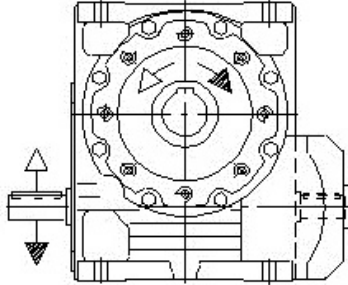
Fastening nuts: M16 UNI 5588. With screw UNI 5737, see pag. 81 Cat. A04 rev.11-06/2

Ref. A04 R V 125 UO2A/40 V5
Technical Report 1.0

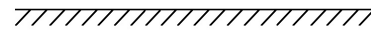
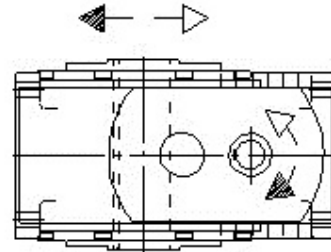
DE-16-001373/00 pos. 1

Worm Gear reducer - catalogue A04

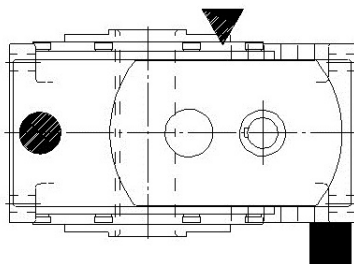
Design: UO2A



Mounting position: V5

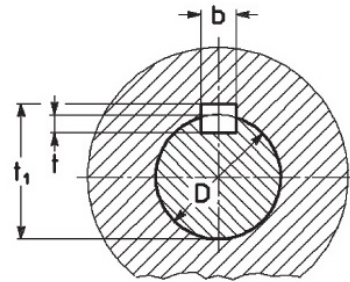


Plugs position (supplied without oil as standard)



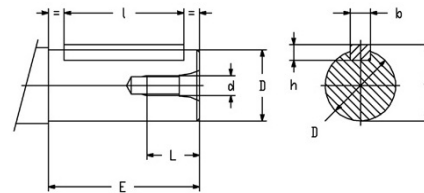
- ▼ = filler plug (in view/not in view)
- = level plug (in view/not in view)
- = filler plug (in view/not in view)

Standard hollow low speed shaft



D	b x h x l	b	t	t ₁
ø60 H7	18 x 11 x 140	18	7	64,4

High speed shaft: ø32k6



D	E	d	b x h x l	L	t ₀
ø24 j6	50 (36)	M8	8x7x45 (25)	21	27
ø28 j6	60 (42)	M8	8x7x45 (36)	21	31
ø32 k6	80 (58)	M10	10x8x70 (50)	26	35