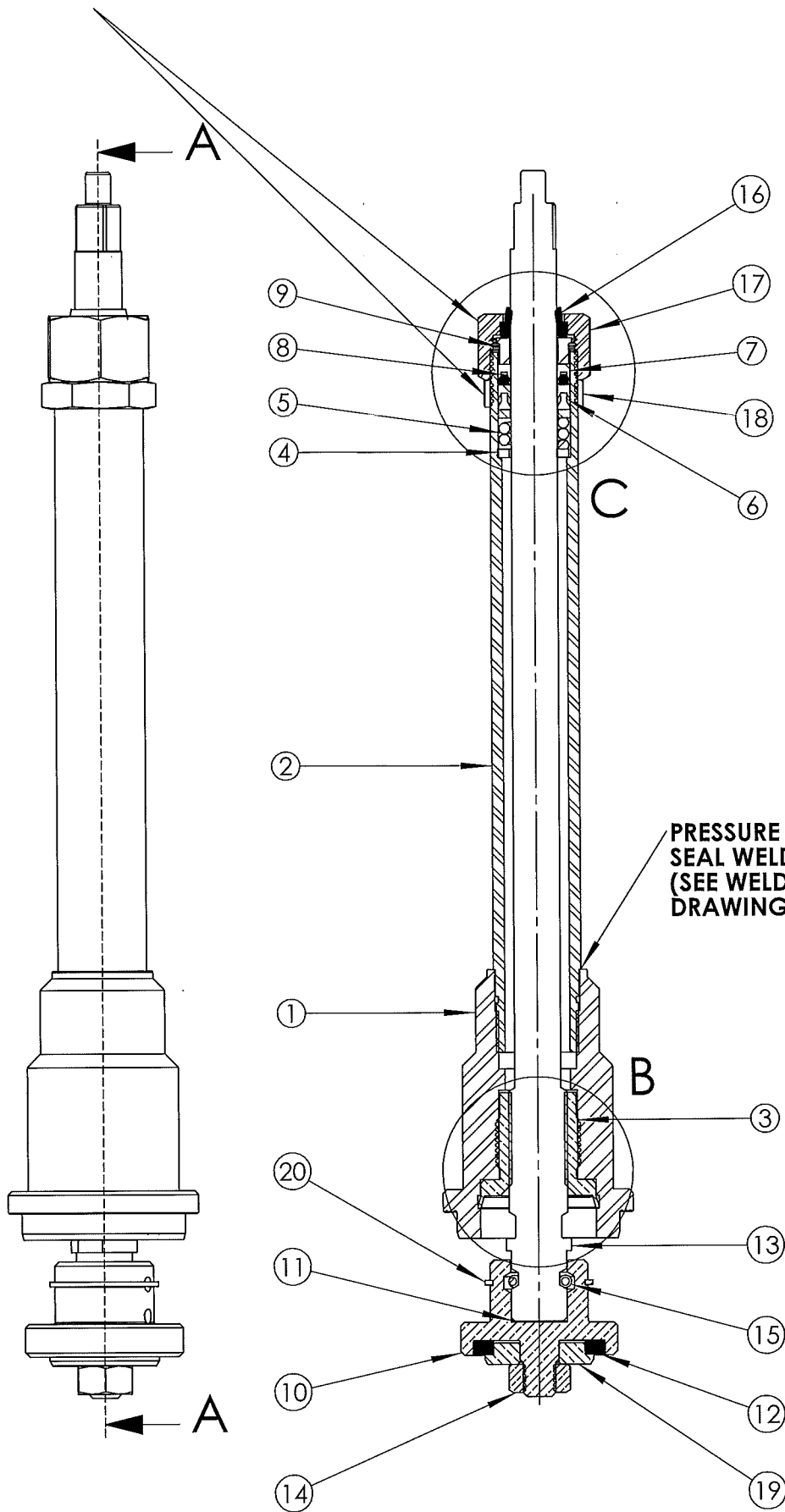
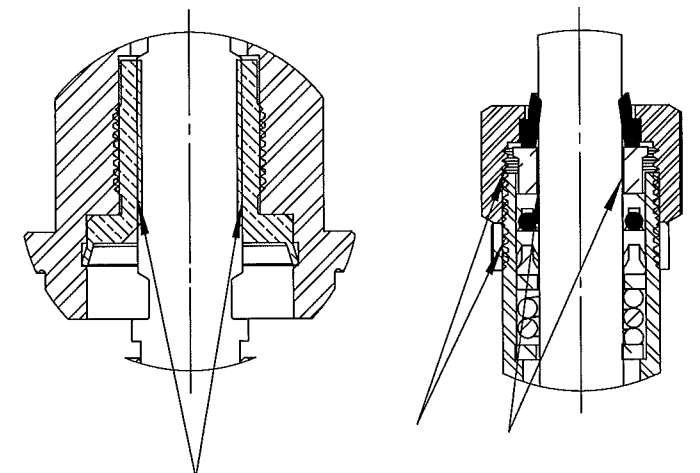


**16Nm (12lbf) TORQUE SHOULD APPLIED TO THE GLAND NUT/LOCK NUT**



ITEM NUMBER	PART NUMBER	DESCRIPTION	MATERIAL		QTY.	
			DESCRIPTION	BS' STD		BSEN' STD
1	L0201F012	15mm Cover (Bronze Insert)	STAINLESS STEEL 304	BS 970 304 S31	BSEN 10088 - 3 1.4301	1
2	L0201F014	Extension Tube 15mm Globe Valve 230mm	STAINLESS STEEL 304L	****	ASTMAS312 304L	1
3	M00114E553B6800	15mm Threaded Bush	PHOSPHOR BRONZE	BS 2874 PB102	BSEN 12163 CW451K	1
4	B0E67MCB43AD00	Washer To Gland	HIGH TENSILE BRASS	BS 2874 CZ114	BSEN 12164 CW721R	2
5	B0F70AGB43AN900	Gland Spring	STAINLESS STEEL 302	BS 970 302 S28		1
6	B00096L143AH00	PTFE Bottom Chevron	VIRGIN PTFE	****	****	1
7	B00092L143AK00	PTFE Top Chevron	VIRGIN PTFE	****	****	2
8	B0A60JJ2B200	O' Seal (REF 0126-24)	VITON RUBBER	****	****	1
9	M0007CC630C300	Gland Follower	HIGH TENSILE BRASS	BS 2874 CZ114	BSEN 12164 CW721R	1
10	MCN04QC630W1B00	15mm Disc Sep. Seal	HIGH TENSILE BRASS	BS 2874 CZ114	BSEN 12164 CW721R	1
11	B0004CL1A3A302	AF Disc 10.16 Dia x 0.254	VIRGIN PTFE	****	****	1
12	B0A60DL543AF00	Seal	HOSTAFLOX TF3105 25% GLASS FILLED	****	****	1
13	MCN141GC30SEL300	230mm Stem 15mm	STAINLESS STEEL 316	BS 970 316 S31	BSEN 10088 - 3 1.4401	1
14	B0D66GC60500	Bent Beam Full Nut (Binx Nut)	HIGH TENSILE BRASS	BS 2874 CZ114	BSEN 12164 CW721R	1
15	B00271G6A100	Ball Solid 3mm	STAINLESS STEEL 316	BS 970 316 S31	BSEN 10088 - 3 1.4401	8
16	B0A60YJ343AQ00	Wiper Seal	EPDM RUBBER 80/85 DEGREES SHORE	****	****	1
17	B0D66LG6B75D301	Gland Nut	ST.ST 304S31 BSEN 10088-3 1.4301	BS 970 304 S31	BSEN 10088 - 3 1.4301	1
18	M0D66JG6B75B01	Gland Lock Nut	ST.ST 304S31 BSEN 10088-3 1.4302	BS 970 304 S31	BSEN 10088 - 3 1.4301	1
19	MCN06CC63000	Seal Retainer	HIGH TENSILE BRASS	BS 2874 CZ114	BSEN 12164 CW721R	1
20	B0E712BRK900	Circlip RSN-68	BERYLLIUM COPPER	****	****	1

**TEST PROCEDURE**  
 TURN HEADWORK HANDWHEEL ANTI-CLOCKWISE TO RAISE DISC HOLDER TO ITS UPPERMOST POSITION, THEN TURN THE HANDWHEEL 1-REV CLOCKWISE TO MOVE THE STEM COLLAR OFF THE COVER. FIT THE HEADWORK ONTO THE APPROPRIATE BODY C/W GASKET & CAPSCREWS. SHELL TEST THE ASSEMBLY TO 1100 PSI USING (CLEAN DRY AIR OR NITROGEN) UNDER WATER. CHECK FOR ANY EXTERNAL LEAKS. IF OK EXHAUST THE PRESSURE. TURN THE HANDWHEELCLOCKWISE TO CLOSE THE VALVE. TEST THE SEAT TO 798 PSI. CHECKS FOR LEAKS AT OUTLET. NO LEAKAGE IS ALLOWED OVER 15 SECONDS. FOR REFERENCE ONLY SEE TEST PROCEDURE TEST SPECIFICATION Q29



**USE FOMBLIN LUBRICANT VERY SPARINGLY. FOMBLIN TO BE COATED ON THE STEM THREAD, THE STEM SHANK IN THE GLAND AREA AND THE INTERNAL THREADS ON THE GLAND NUT AND GLAND LOCK NUT**

FOMBLIN 1245X/s LIQUID IS MIXED WITH FOMBLIN PFS-1 THINNERS  
 1-PART FOMBLIN 1245X TO 4-PARTS PFS-1 THINNERS  
 AFTER MIXING THE MIXTURE SHOULD BE STORED IN AN AIR TIGHT CONTAINER PRIOR TO APPLICATION TO THE VALVE PARTS.

**TITLE: 15mm BB HEADWORK 230mm EXTENSION & FLAT SEAT.**

MACHINING DATA	CAD GENERATED DRAWING DO NOT MANUALLY UPDATE. ALL DIMENSIONS IN MM UNLESS STATED OTHERWISE. DO NOT SCALE DRAWING.	DRAWN	C.H	PROJECTION 
COMPONENT M/C ✓		CHECKED	N.T.S.	
(✓) GIVES SPECIAL FINISH.	This drawing and the copyright therein are the property of FLOW GROUP, and all information which it contains is confidential. The drawing must not be reproduced or disclosed nor must any information taken therefrom be disclosed, without the prior consent in writing of FLOW GROUP.	SCALE	N.T.S.	DATE
STANDARD FINISH 0.8 MICRONS.		DATE	23-11-2009	
M/C OPEN DIMENSIONS ± 0.25mm		MATERIAL	SEE TABLE	ISSUE No.
THREADS MEDIUM FIT B.S.	<b>DRAWING No. CNBB303DFIN</b>			
CONCENTRICITY T.I.R.	<b>MAT./PAT. No.</b>			
DEBURR ALL EDGES	FLOW GROUP, PRESIDENT PARK, PRESIDENT WAY, SHEFFIELD, S4 7UR, ENGLAND. TEL: (0114) 2240000 FAX: (0114) 2240240			