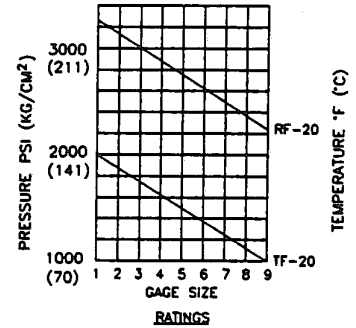
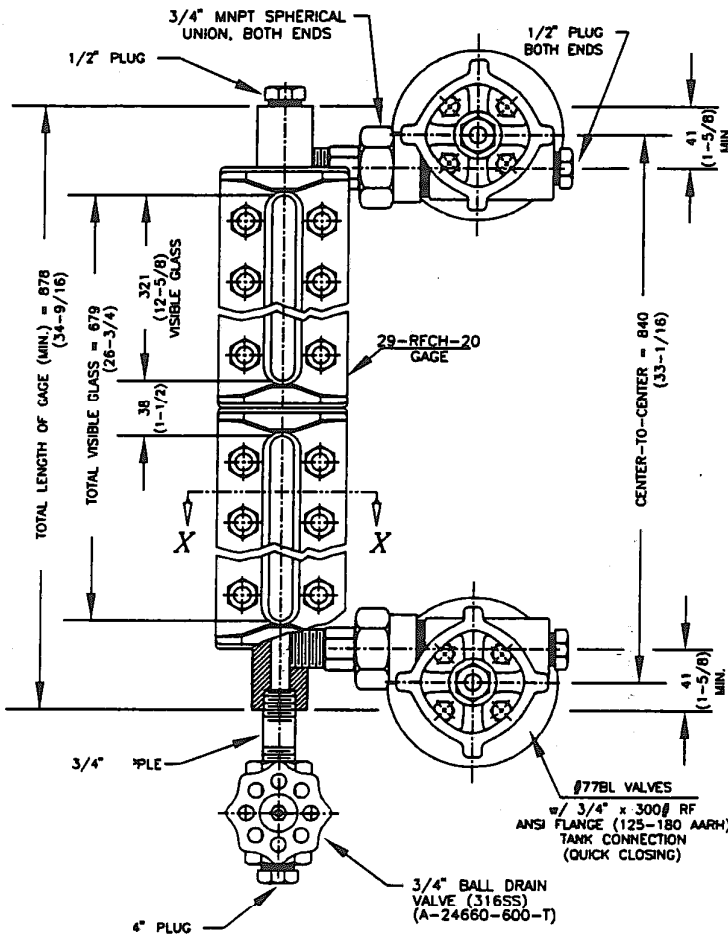


BILL OF MATERIAL

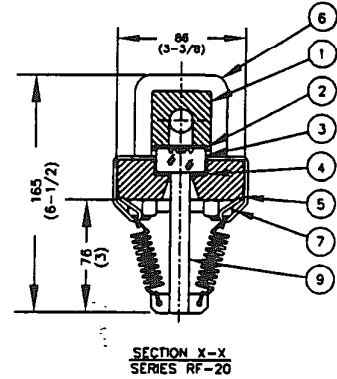
PIECE NO.	NAME OF PART	QTY.	MATERIAL	PART NO.	REMARKS
1	CHAMBER	1	LOW TEMP CS	L-1591-29-A32	ASTM A537
2	GASKET	2	IFG5500	V-18980-9	NON-ASBESTOS
3	GLASS	2	TEMPERED GLASS	V-16757-9	
4	CUSHION	2	IFG5500	V-18980-9	NON-ASBESTOS
5	COVER	2	LOW TEMP CS	V-438-9-A62	ASTM A537
6	U-BOLT	16	ALLOY STL	P-256-B7M	ASTM A193 GR.B7M
7	NUT	32	STEEL	V-11062-2M	ASTM A194 GR.2M
8	RATING TAG	1	S. S.	V-16341-9	
9	EXTENTION ASMBLY	2	PLASTIC	S-18678-9	

- NOTES:**
- DIMENSIONS IN mm w/ INCH EQUIVALENT IN PARENTHESES.
 - UNIT RATING W/ 300# RF FLANGES:
740 PSI @ 100°F, 600 PSI @ 500°F
52 KG/CM² @ 38°C, 42 KG/CM² @ 260°C

MAX. STEAM RATING FOR SERIES 20 REFLEX GAGES IS 300 W.S.P.



NOTE: -151°F TO -325°F USE 70% OF RATING SHOWN



TAG No.	ORIENTATION •
504-LG-0116	A
604-LG-0116	A

29-RFCH-20 GAGE WITH #77BL VALVES	JERGUSON GAGE & VALVE CO. STRONGSVILLE, OHIO, U.S.A.	DRAWN LMC CHECKED APPROVED	FILE NO. DRAWING NO. 94065-14 REV. 4
SCALE NONE DATE 5/9/97			