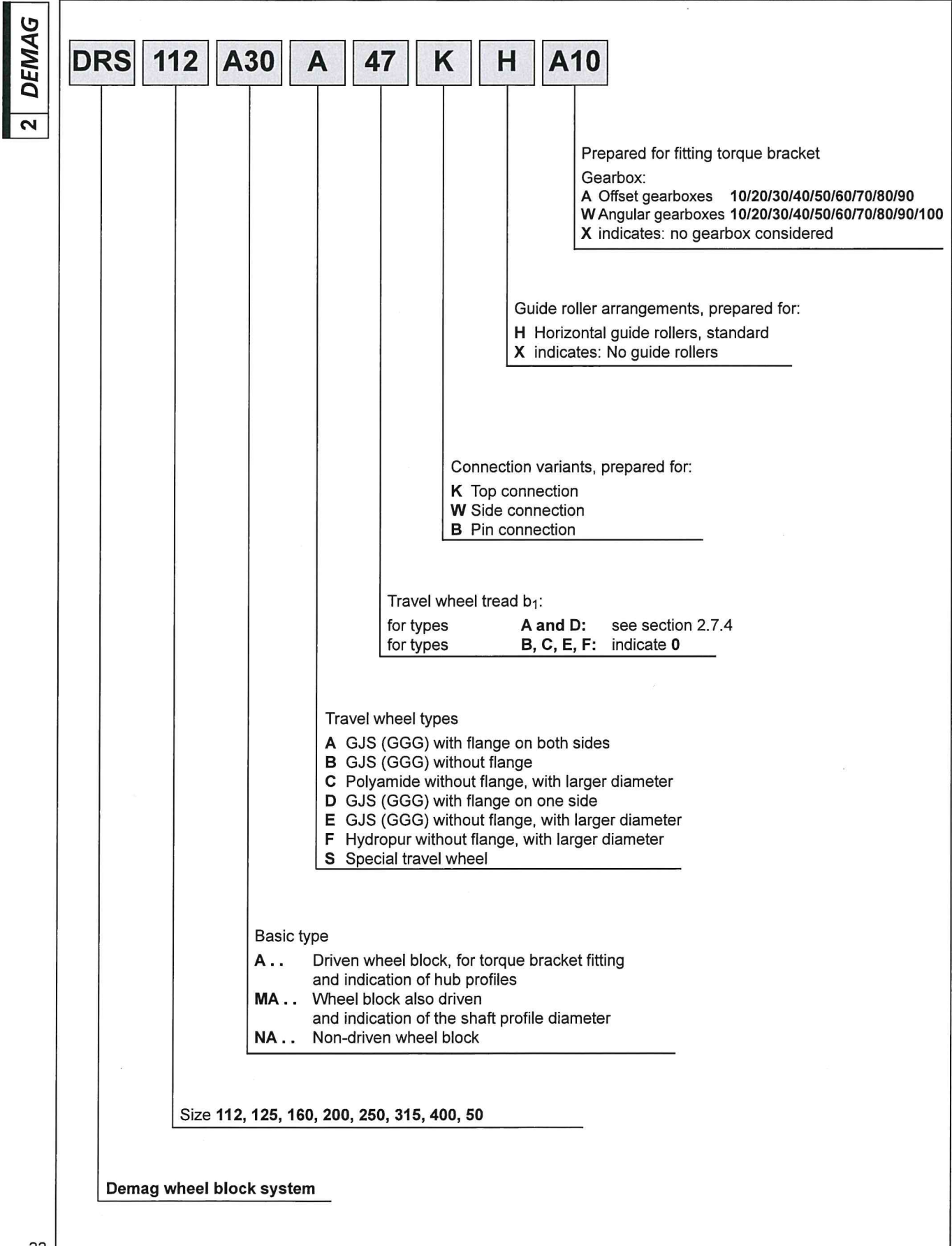


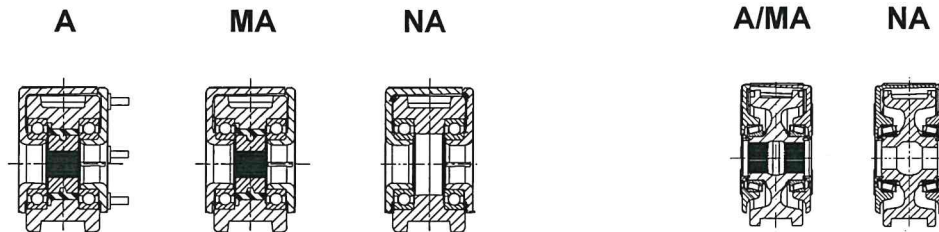
2 Demag DRS wheel block system - Selection

2.1 Type designation key (example) for basic wheel blocks



DRS 112 – 200 basic types

DRS 250 – 500 basic types



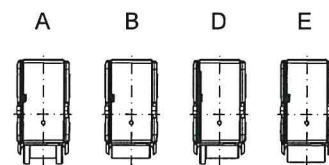
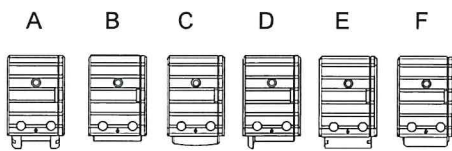
Hub profile see section 2.3

42099544.eps

42099545.eps

DRS 112 – 200 travel wheel variants

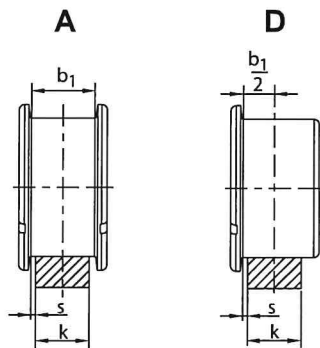
DRS 250 – 500 travel wheel variants



42099044.eps

42098944.eps

Travel wheel tread

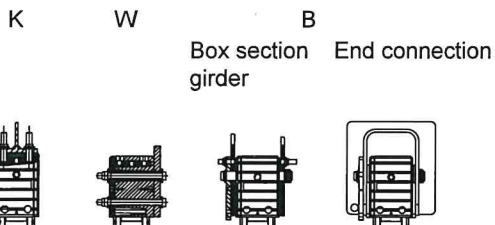


41617944.eps

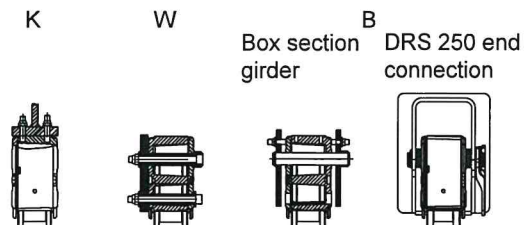
Travel wheel diameter	Travel wheel width	Travel wheel tread b_1 ²⁾				Distance s		Rail width k
		Standard travel wheel type		per side ¹⁾				
		to	to ³⁾	A	D	min.	max.	
112	80	60	62	47, 60	47	1	5	40, 45, 50, 55, 60
125	80	60	62	47, 60	47, 60	1	5	40, 45, 50, 55, 60
160	89	65	67	47, 60, 65	47, 65	1	5	40, 45, 50, 55, 60, 65
200	101	67	75	65, (75 ³⁾)	65	1	5	50, 55, 60, 70
250	110	77	80	52, 65, 75	65, 75	1	5	50, 55, 60, 70, 75
315	130	90	96	80, 90	80, 90	1	5	60, 70, 75, 80, 90
400	155	110	-	80, 90, 110	80, 110	1	5	65, 70, 75, 80, 90, 100
500	170	110	-	90, 110	90, 110	1	5	70, 75, 80, 90, 100

DRS 112 – 200 connection variants

DRS 250 – 500 connection variants



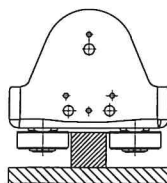
42099344.eps



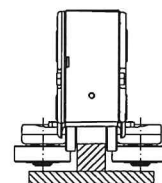
42099444.eps

DRS 112 – 200 roller guide arrangements

DRS 250 – 500 roller guide arrangements



42099144.eps



42099244.eps

1) Tolerance class 2 to VDI 3576
 2) DRS 112 – 200 available in steps of 1 mm
 3) Hardened travel wheels (treads and flanges), for DRS 112 – 200, flanges without wear indicator