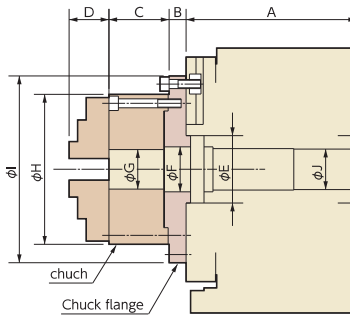
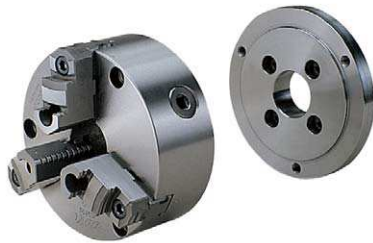


Chuck

Scroll Chuck



Chuck size (inch)	Chuck type	Outer chucking range (mm)	Inner chucking range (mm)
4	TC110F	2 ~ 106	36 ~ 102
5	TC130F	3 ~ 130	42 ~ 123
6	TC165F	3 ~ 156	52 ~ 148
7	TC190F	3 ~ 184	56 ~ 174
9	TC230F	4 ~ 214	64 ~ 202
10	TC273F	10 ~ 246	72 ~ 230
12	TC310F	10 ~ 275	82 ~ 265
15	TC385F	15 ~ 345	100 ~ 327
18	TC460F	15 ~ 410	152 ~ 436

Note 1: The values in the table above are the dimensions with hardened jaws. (Soft jaws are optional.)
 Note 2: Some workpieces, even in the chucking range, may not be chucked due to jaw configuration.

Unit: mm

	Chuck size (inch)	A	B	C	D	E	F	G	H	I	J
RBS-160	4	170	18	58	31.3	55	45	24	112	112	40
	5			60	37.3			32	132	132	
	6			66	44.3			44	167	167	
RBS-250	7	180	18	75	46.3	80	65	54	192	192	50
	5			60	37.3			32	132	132	
	6			66	44.3			44	167	167	
RBS-320	7	225	18	75	46.3	115	100	54	192	192	85
	9			82	55.3			70	233	233	
	10			86	53.3			100	274	274	
RN-100	12	145	10	92	59.3	50	50	110	310	310	30
	4			58	31.3			24	112	112	
	5			60	37.3			32	132	132	
RWE/RWA-160	6	155	18	58	31.3	55	45	24	112	112	40
	5			60	37.3			32	132	132	
	6			66	44.3			44	167	167	
	7			75	46.3			54	192	192	
RWE/RWA-200	5	165	18	60	37.3	65	55	32	132	132	45
	6			66	44.3			44	167	167	
	7			75	46.3			54	192	192	
	9			82	55.3			70	233	233	
RWA-250	5	165	18	60	37.3	80	65	32	132	132	50
	6			66	44.3			44	167	167	
	7			75	46.3			54	192	192	
	9			82	55.3			70	233	233	
RWA-320	6	210	18	66	44.3	115	100	44	167	167	85
	7			75	46.3			54	192	192	
	9			82	55.3			70	233	233	
	10			86	53.3			100	274	274	
	12			92	59.3			110	310	310	
RNCM-251	5	165	20	60	37.3	40	30	32	132	168	32
	6			66	44.3			44	167	167	
	7			75	46.3			54	192	198	
	9			82	55.3			70	233	233	
RNCM-301	6	220	20	66	44.3	40	30	44	167	208	40
	7			75	46.3			54	192	238	
	9			82	55.3			70	233	233	
	10			86	53.3			100	274	274	
RNCM-401	12	250	25	92	59.3	40	30	110	310	318	40
	7			75	46.3			54	192	238	
	9			82	55.3			70	233	233	
	10			86	53.3			100	274	274	
RNCM-501	9	300	25	82	55.3	50	40	70	233	288	50
	12			92	59.3			110	310	378	

Unit: mm

	Chuck size(inch)	A	B	C	D	E	F	G	H	I	J
RBA-250	6	180	18	66	44.3	95	65	44	167	208	71
	7		18	75	46.3		65	54	192	236	
	9		25	82	55.3		76	70	233	233	
RBA-320	6	240	18	66	44.3	130	101	44	167	216	101
	7		18	75	46.3			54	192	246	
	9		25	82	55.3			70	233	286	
	10		25	86	53.3			100	274	318	
RBA-400	12	275	25	92	59.3	190	151	110	310	370	151
	7		20	75	46.3			54	192	286	
	9		25	82	55.3			70	233	286	
	10		25	86	53.3			100	274	336	
	15		30	100	70.3			150	385	385	
RBA-500	9	325	25	82	55.3	220	170	70	233	356	182
	12		25	92	59.3		210	110	310	386	
	15		30	100	70.3		210	150	385	460	
	18		35	114	79.8		210	180	460	500	

Note 1: The above dimensions refer to power chucks by KOBAYASHI IRON WORKS CO., LTD.

Note 2: The flange type and the method of attaching the flange fixing bolt differ depending on the rotary table and the chuck size.

RBS

TBS

RWE/RWA
RN

RWE/RWA-B
RNCV-B

RNCM

RBA

RBA-K
RNCK

RCH
RNC

RCV
RNCV

Multi-Spindle
RN-N

TWA/TN

TTNC

THNC

Multi-Spindle
TTNC-N

RC
RH

RUA

TSUA

RDS

RTV
RTT

RCB

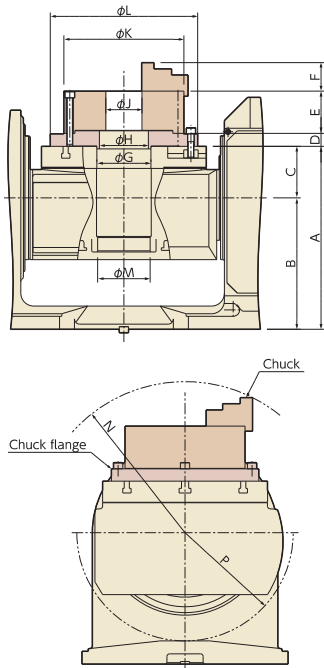
NC Controllers

Accessories

Options

Technical
Information

Unit: mm



Order Code	Chuck size (inch)	A	B	C	D	E	F	G	H	J	K	L	M	N	P
TBS-160	4	235	180	55	18	58	31.3	55	45	24	112	112	40	R176	R135
	5					60	37.3			32	132	132		R189	
	6					66	44.3			44	167	167		R208	
	7					75	46.3			54	192	192		R226	
TN-101	4	180	135	45	15	58	31.3	55	45	24	112	112	35	R164	R106
	5					60	37.3			32	132	132		R177	
TWA-130	5	210	150	60	18	60	37.3	55	45	32	132	132	35	R193	R114
TWA-160	4	235	180	55	18	58	31.3	55	45	24	112	112	40	R176	R135
	5					60	37.3			32	132	132		R189	
	6					66	44.3			44	167	167		R208	
	7					75	46.3			54	192	192		R226	
TWA-200	5	270	210	60	18	60	37.3	65	55	32	132	132	45	R200	R148
	6					66	44.3			44	167	167		R219	
	7				75	46.3	54			192	192	R236			
	9				25	82	55.3			70	233	233		R258	
TN-320	6	355	255	100	18	66	44.3	105	95	44	167	256	102	R254	R210
	7					75	46.3			54	192	256		R271	
	9				82	55.3	70			233	286	R294			
	10				86	53.3	100			274	318	R303			
	12				92	59.3	110			310	318	R323			
TN-450	9	425	425	0	25	82	55.3	170	150	70	233	316	136	R213	R375
	10					86	53.3			100	274	336		R222	
	12				92	59.3	110			310	370	R244			
	15				30	100	70.3			150	385	445		R288	

Note 1: The above dimensions refer to power chucks by KOBAYASHI IRON WORKS CO., LTD.

Note 2: The flange type and the method of attaching the flange fixing bolt differ depending on the rotary table and the chuck size.

Example **P.31**