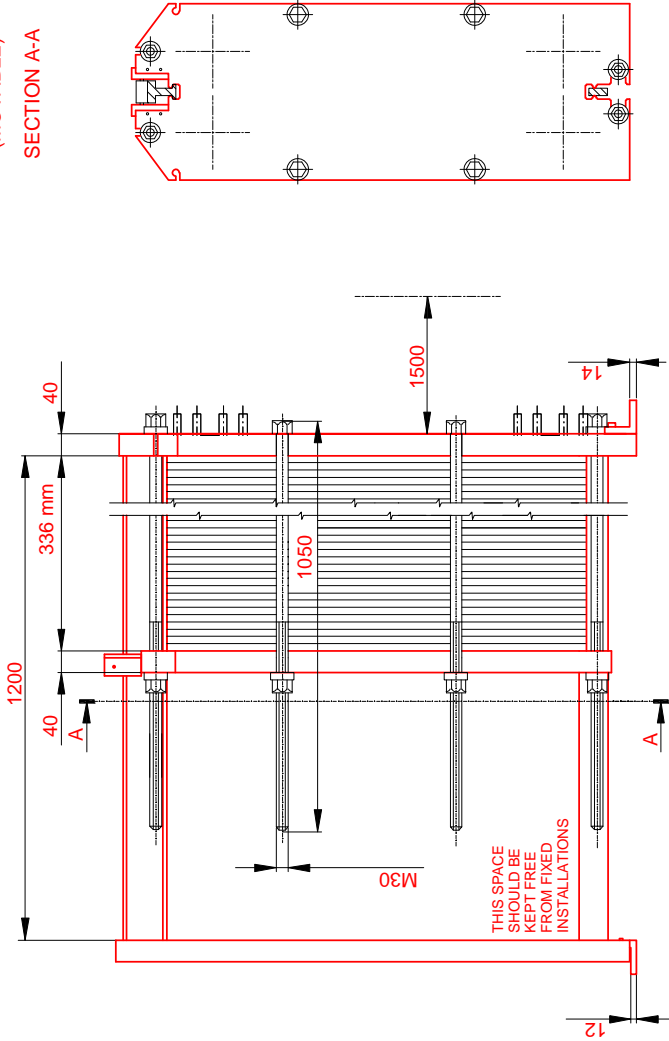


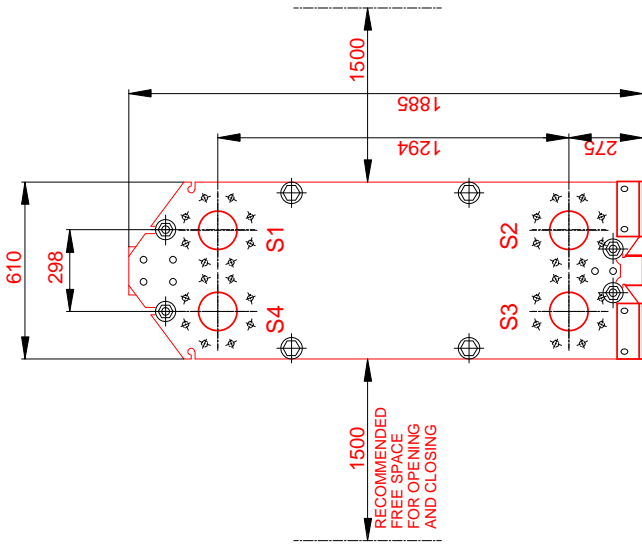
PRESSURE PLATE
(MOVABLE)

SECTION A-A



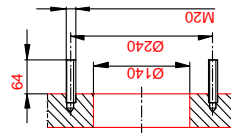
2 HOLES Ø40 FOR M24 FOUNDATION BOLTS

FRAME PLATE
(FIXED)



1500
RECOMMENDED
FREE SPACE
FOR OPENING
AND CLOSING

EN 1092-1 DN150 PN10
UNLINED
S1,S2,S3,S4



| REMARKS: | SIDE 1 | SIDE 2 |
|-------------------|---------|---------|
| TEST PRESSURE | 7.2 bar | 7.2 bar |
| DESIGN PRESSURE | 5 bar | 5 bar |
| MAX TEMPERATURE | 65 °C | 45 °C |
| MIN TEMPERATURE | 0 °C | 0 °C |
| NETWEIGHT | 1060 kg | |
| WEIGHT WITH WATER | 1234 kg | |

| | |
|-----------------|---------------------|
| GASKET | NBRB Clip-on |
| PLATE MATERIAL | ALLOY 316 |
| PLATE THICKNESS | 0.50 mm |
| HEATING SURFACE | 68.2 m ² |
| PLATE GROUPING | 1*56L/1*55L |
| HEAT LOAD | 184 kW |

| | |
|--------------|------|
| TOTAL LENGTH | 1450 |
| TOTAL WIDTH | 610 |
| TOTAL HEIGHT | 1885 |

Do not use this drawing for foundation bolting or piping layout.

ALL DIMENSIONS IN MILLIMETERS

| SIDE | MEDIA | F.D.G. | INLET | TEMP. | OUTLET | TEMP. | FLOW RATE | PRESSURE DROP | LIQUID VOL. |
|------|----------------|--------|-------|---------|--------|---------|-----------------------|---------------|-----------------------|
| 1 | Oil ISO VG 100 | 1 | S1 | 62.7 °C | S2 | 45.0 °C | 22.1m ³ /h | 25.73 kPa | 88.02 dm ³ |
| 2 | Water | 2 | S3 | 35.0 °C | S4 | 40.1 °C | 31.0m ³ /h | 2.198 kPa | 86.47 dm ³ |

| | | |
|--------------------------|--------------------|----------|
| SUPPLIER | REF. | ITEM NO. |
| AGENT / REF. | | 179306 |
| CUSTOMER NAME / REF. NO. | | |
| SIGN. Slav Slavov | RISK CATEGORY 3 | |

PLATE HEAT EXCHANGER

M15-BFM

PED



| | |
|------------|-----|
| | |
| 0000179306 | |
| DATE | REV |
| 2017-09-15 | 0 |