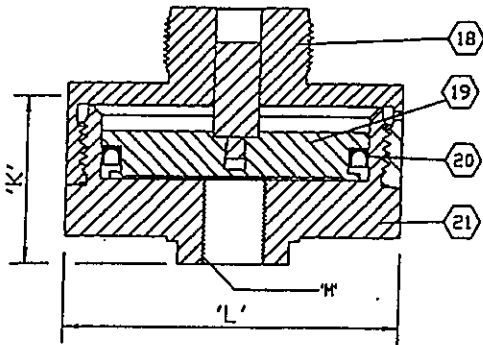


PSHH-092Q2  
PSLL-093Q2

SPRING CODES (COLOR)		AVAILABLE RANGES, PSI (BAR)													
STD. SPRING	INCONEL SPRING	5-20 (.03-1.4)	4-40 (.3-2.75)	10-80 (.7-5.5)	10-115 (.7-7.9)	20-230 (1.4-15.8)	50-450 (3.4-31)	200-750 (13.8-51.8)	500-1500 (34.5-103.5)	1000-3000 (69-207)	1000-3000 (69-207)	2000-5000 (138-345)	5000-10000 (345-689)	2000-9000 (138-620)	3500-20000 (241-1380)
B (BLUE)	G (GREEN)	X			X			X			X			X	
R (RED)	Y (YELLOW)		X			X			X			X			X
S (SILVER)	P (PURPLE)			X			X			X		X			X
PISTON DIA.		3.0"	3.0"	3.0"	1.25"	1.25"	1.25"	.50"	.50"	.50"	.25"	.25"	.25"	.187"	.187"
PISTON CODE		0	0	0	1	1	1	2	2	2	3	3	3	4	4
		OPTIONAL BASE				OPTIONAL PISTON						OPTIONAL BASE			



3.0" SENSOR BASE ASSEMBLY  
(PART NO. 42-017-000)

PARTS LIST FOR 3.0" SENSOR BASE				
ITEM	QTY.	DESCRIPTION	MATERIAL	PART NO.
18	1	UPPER HOUSING	17-4 PH ST. STL.	42-011-000
19	1	PISTON ASSEMBLY	17-4 PH ST. STL.	42-024-000
20	1	SEAL	VTN	VJ-334-75T
21	1	LOWER HOUSING	17-4 PH ST. STL.	42-012-000
22	-	REPAIR KIT	ITEMS 7 & 20	42-015-000

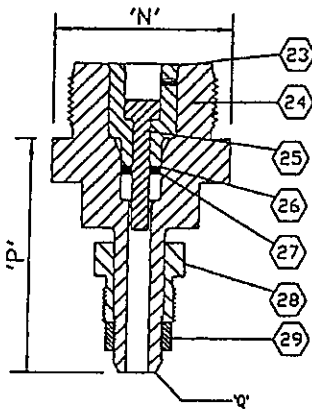
3.0" SENSOR BASE SPECIFICATIONS

SENSOR TYPE	PISTON
MAX. OPER. PRESSURE	5,000 PSI (345 BAR)
BURST PRESSURE	10,000 PSI (690 BAR)
AMBIENT TEMPERATURE RANGE	-20 TO 250° F -29 TO 122° C

3.0" SENSOR BASE DIMENSIONS

K	2.0 IN. (50.8 mm)
L	3.75 IN. (95.2 mm)
M	1/2" FNPT
WEIGHT *	8.5 LBS. (3.7 KG.)

\* FOR SWITCH AND 3.0" SENSOR BASE



.187" SENSOR BASE ASSEMBLY  
(PART NO. 42-018-000)

PARTS LIST FOR .187" SENSOR BASE				
ITEM	QTY.	DESCRIPTION	MATERIAL	PART NO.
23	1	RETAINER SLEEVE	AISI 316 ST. STL.	42-021-0A0
24	1	.187" SENSOR BASE	17-4 PH ST. STL.	42-019-0A0
25	1	.187" PISTON	17-4 PH ST. STL.	42-020-000
26	1	BACK-UP RING	TEFLON	42-010-380
27	1	SEAL	VTN	VP-201-75H
28	1	9/16" GLAND NUT	AISI 316 ST. STL.	42-022-000
29	1	9/16" GLAND COLLAR	AISI 316 ST. STL.	42-023-000
30	-	REPAIR KIT	ITEMS 7, 26 & 27	42-016-000

.187" SENSOR BASE SPECIFICATIONS

SENSOR TYPE	PISTON
MAX. OPER. PRESSURE	20,000 PSI (1380 BAR)
BURST PRESSURE	40,000 PSI (2760 BAR)
AMBIENT TEMPERATURE RANGE	-20 TO 250° F -29 TO 122° C

.187" SENSOR BASE DIMENSIONS

N	2.0 IN. (50.8 mm)
P	2.57 IN. (65.3 mm)
Q	9/16"/M/P AUTOCLAVE
WEIGHT *	5.0 LBS. (2.3 KG.)

\* FOR SWITCH AND .187" SENSOR BASE

ORDERING CODE: 4202 -2R 000  
4202 X X X 000

BASE MODEL NUMBER

MATERIAL OPTIONS

Standard Corrosive Service ---(-)

N.A.C.E. Option-----(-N)

SPRING CODE (See Range Chart)

PISTON CODE (See Range Chart)

添付図-1