

Coaxial Bandpass Filter

VBF-2555+

50Ω 2500 to 2610 MHz

Maximum Ratings

Operating Temperature	-55°C to 100°C
Storage Temperature	-55°C to 100°C
RF Power Input*	1.5W at 25°C

*Passband rating, derate linearly to 0.25W at 100°C ambient. Permanent damage may occur if any of these limits are exceeded.

Features

- Good VSWR, 1.6:1 Typ @ Passband
- Rugged uni-body construction, small size
- Temperature stable

Applications

- Harmonic rejection
- Transmitters/receivers
- Lab use
- Test instrumentation



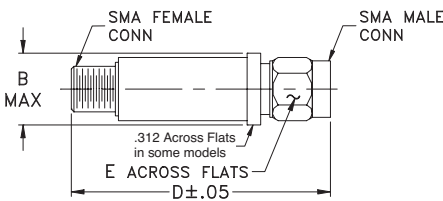
CASE STYLE: FF704

Connectors	Model	Price	Qty.
SMA	VBF-2555+	\$34.95 ea.	(1-9)

+RoHS Compliant

The +Suffix identifies RoHS Compliance. See our web site for RoHS Compliance methodologies and qualifications

Outline Drawing



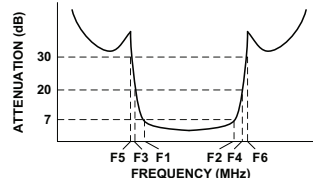
Outline Dimensions (inch mm)

B	D	E	wt.
.410	1.43	.312	grams
10.41	36.32	7.92	10

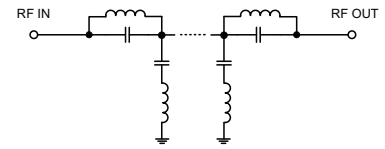
Bandpass Filter Electrical Specifications (T_{AMB} = 25°C)

CENTER FREQ. (MHz)	PASSBAND (MHz) (Loss < 7dB)	STOPBANDS (MHz)				VSWR (:1)		
		Loss > 20dB		Loss 30dB Typ		Passband		Stopband
Fc	F1 - F2	F3	F4	F5	F6	Typ.	Max.	Typ.
2555	2500 - 2610	1970	3200	2000	3250 - 5500	1.6	2.8	20

Typical Frequency Response

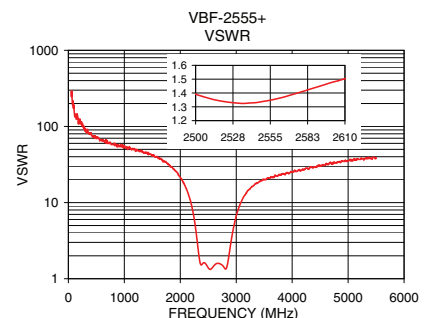
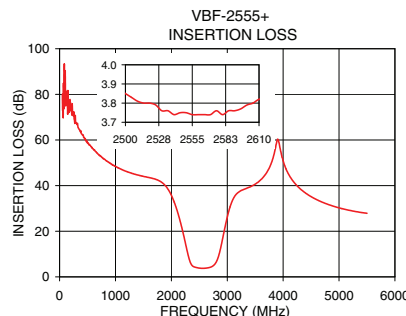


Functional Schematic



Typical Performance Data at 25°C

Frequency (MHz)	Insertion Loss (dB)	VSWR (:1)
50	72.26	289.53
200	74.05	115.81
500	59.32	69.49
1000	48.65	54.29
1970	37.58	23.18
2000	36.10	21.46
2200	20.97	9.33
2300	10.44	3.23
2350	6.26	1.68
2500	3.77	1.39
2555	3.69	1.35
2610	3.78	1.50
2850	7.92	1.64
2920	14.90	3.49
3000	24.49	6.66
3200	37.30	14.15
3250	38.25	15.26
3700	46.50	22.87
4500	34.74	31.03
5500	27.76	38.61



For detailed performance specs & shopping online see web site

P.O. Box 350166, Brooklyn, New York 11235-0003 (718) 934-4500 Fax (718) 332-4661 The Design Engineers Search Engine Provides ACTUAL Data Instantly at minicircuits.com

Notes: 1. Performance and quality attributes and conditions not expressly stated in this specification sheet are intended to be excluded and do not form a part of this specification sheet. 2. Electrical specifications and performance data contained herein are based on Mini-Circuit's applicable established test performance criteria and measurement instructions. 3. The parts covered by this specification sheet are subject to Mini-Circuits standard limited warranty and terms and conditions (collectively, "Standard Terms"); Purchasers of this part are entitled to the rights and benefits contained therein. For a full statement of the Standard Terms and the exclusive rights and remedies thereunder, please visit Mini-Circuits' website at www.minicircuits.com/MCLStore/terms.jsp.

REV. B
M129173
EDR-8495F2
VBF-2555+
RAV
121016
Page 1 of 1