



TYPE

Phafo 12.42/380.75/1

10.07.2017

Artikel:

5961-62985-01

NOMINAL RATINGS

Rated output	Qn	380,75 kvar
Rated voltage	Un	12,42 kV rms
Capacitance	Cn	7,86 μ F
Rated current	In	30,7 A
Frequency	fn	50 Hz
Isolation level	Ui	50/125 kV BIL
Internal fuse		YES
Pressure switch		NO
Discharge resistor		600sec/75V
Installation		outdoor
Connection	I	single phase

BUSHING

D-404

Number	2
Material	Porcelain
Flash over distance	193 mm
Creepage distance	472 mm
Terminal	M 16

Standard

IEC60871-1

OPERATING TEMPERATURE

Minimum ambient:	Tmin	0 °C
Maximum ambient:	Tmax	+45 °C

STORAGE TEMPERATURE (>3 month)

Ambient	Tmin	-30 °C
Ambient	Tmax	+40 °C

TECHNOLOGY

Dielectric	Allfilm
Filling material	Polypropylene
Quantity of oil	C101
	12,1 l

DESIGN DATA

Weight	59 kg
Casing material	Stainless steel ED
Painting	RAL 7033
Mounting position	vertical *)
Dimensions	345*135*760 mm

ROUTINE TEST

	<i>Test voltage</i>	
Terminal/Terminal		24.840 VAC,10s
Terminal/Terminal		49.680 VDC,10s
Terminal/Case		50.000 VAC,10s

DRAWING

ME-722-212-001	HT	1065 mm
	HB	265 mm
	H	760 mm
	A	246 mm
	M	16 mm

*) From electrical perspective, ESTA Capacitors can be erected vertically as well as horizontally

Vishay Europe Sales GmbH

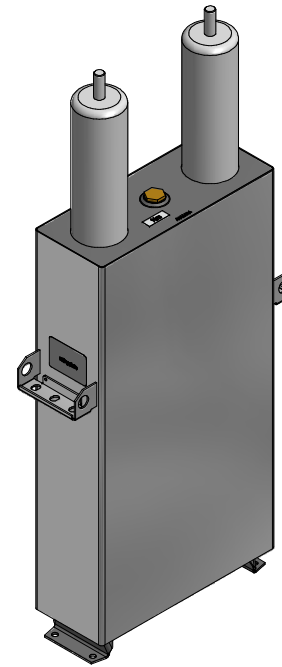
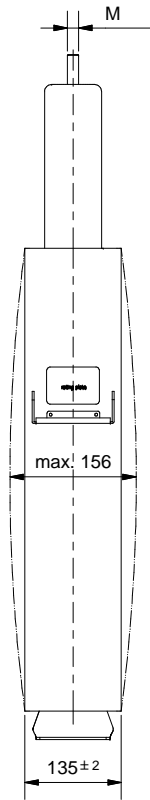
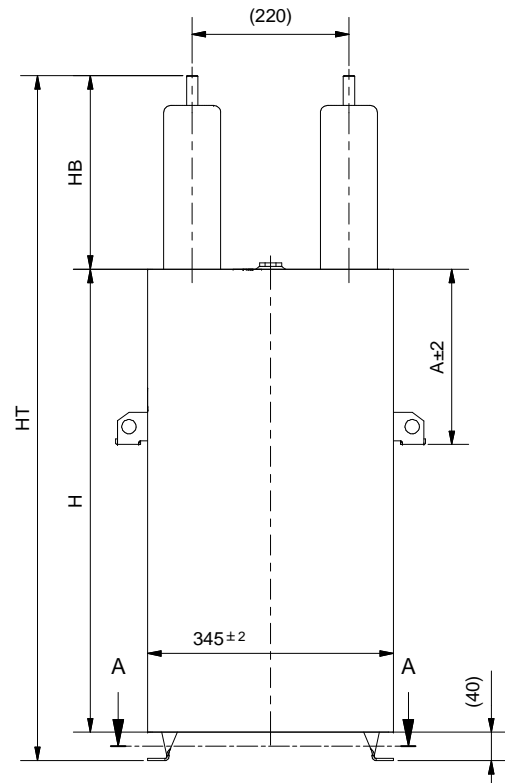
Dr.-Felix-Zandman Platz-1, D-95100 Selb, Germany
Amtsgericht/County Court Hof HRB 2894,
Geschäftsführer/Managing Directors:
Stefan Fischer, Werner Gebhardt, Arnold Rohr

www.vishay.com[Please click here for ZVEI safety instructions](#)

Statements about product lifetime and FIT rate are based on calculations, field data and internal testing. They should only be interpreted as estimations. Also, due to external factors, the lifetime and FIT rate in the field application may deviate from the calculated values. In general, nothing stated herein shall be construed as a guarantee of quality or durability.

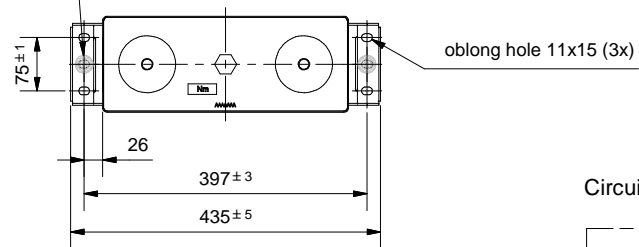
We reserve all rights for this technical document, this applies especially in the case of a patent being issued or a design registered. This technical document may neither be copied nor rendered accessible to third parties without our prior written agreement. Fabrication, reproduction or other utilization - also by means of tools which have been fabricated to this drawing - in accordance with this document is prohibited to third parties. Violation entitle us to claim for damage and may result in prosecution.

Für diese technische Unterlage behalten wir uns alle Rechte vor, dies gilt insbesondere für den Fall einer Patent- oder Gebrauchsmuster-Erteilung. Ohne unsere vorausgehende schriftliche Zustimmung ist jede Vervielfältigung oder Zurverfügungstellung an Dritte untersagt. Herstellung, Nachbau oder sonstige Nutzbarmachung - auch mittels Werkzeugen, die nach dieser Zeichnung hergestellt wurden - entsprechend dieser Unterlage für Dritte ist verboten. Zuwiderhandlungen berechtigen uns, Schadenersatz zu fordern und können strafrechtliche Folgen haben.

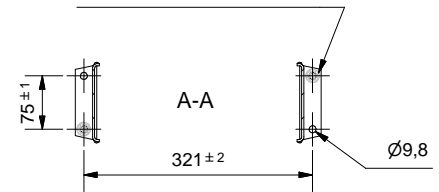


**PRELIMINARY DRAWING
FOR INFORMATION ONLY**
Entwurfszeichnung - nur zur Information

without paint on both sides
equipotential bonding 2x Ø25



without paint on both sides
equipotential bonding 2x Ø19



Circuit diagram:



PERMISSIBLE TOLERANCES ISO 2768: c					
APPLICATION FOR:					
DIMENSIONS IN: mm		SCALE: 1 : 7,5 A3			
MODEL: ME-722-212-001e-A9 - Stamppause.iam					
SPECIFICATION No.:		INDEX	REVISION		DATE NAME
DRAWN: 14.09.2015 sgerstl		MATERIAL:		DESIGNATION: Capacitor Type: Phao ...	
CHECKED: 12.08.2016 pschmidt		WEIGHT: -		REMARK: ME-722-212-001	
DIN ISO 128-30		SUBST. FOR:		DWG-No.: SAP: XXXX-XXXXX	
		SUBST. BY:		ME-722-212-001e-A9	
		STATUS:		EDV-No.: ME-722-212-001e-A9 - Stamppause.dwg	
Hofmark-Aich-Str. 36 84030 Landsshut Germany		VISHAY ESTA Capacitors Division		VISHAY	